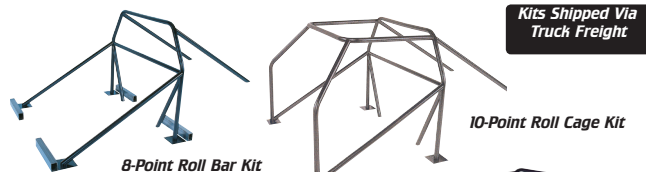


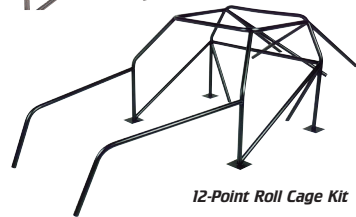
Roll Bars and Cages

Improve the safety and structural strength of any race car. Made from mild steel, 8-point roll bars are 1-3/4" O.D. x .134", 10- and 12-point roll cages are 1-5/8" O.D. x .134". Roll bar/cage kits consist of two part numbers. A main hoop kit and a strut kit must be ordered for each application. Example: a 10-point roll cage kit for a 1979-93 Mustang would include a COE3225 Main Hoop Kit and a COE3310 10-point Strut Kit.



Strut Kits

Part No.	Description
COE3000	8-Point Strut Kit
COE3310	10-Point Strut Kit
COE3300	12-Point Strut Kit



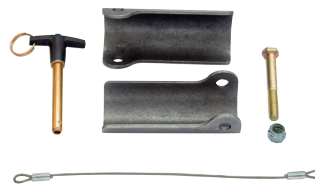
Main Hoop Kits

Application	Roll Bar 8-Pl. Kit	Roll Cage 10-Pl. Kit	Roll Cage 12-Pl. Kit
Chrysler			
1970-76 "A" Body Dart/Duster/Demon/1968-69 Dart/Cuda	COE3123	—	COE3309
1968-74 "B" Body Satellite/Coronet/Belvedere	COE3128	—	—
1970-74 "E" Body Barracuda/Challenger	COE3129	—	—
Ford			
1968-72 Fairlane/Torino/Mercury Montego	COE3124	—	—
1967-73 Mustang/1971-77 Maverick/1977-81 Fairmont/Zephyr	COE3039	—	—
1974-78 Mustang II/1971-80 Pinto	COE3126	—	—
1979-93 Mustang/Mercury Capri	COE3025	COE3225	COE3303
1994-04 Mustang Hardtop	COE3125	COE3229	—
2005-09 Mustang	—	COE3240*	—
General Motors			
1955-57 Chevy	COE3127	—	—
1966-67 Chevy II, Sedan and Wagon	COE3023	COE3221	—
1971-77 Chevy Vega/1975-80 Monza/Astre/Starfire/Skyhawk	COE3026	—	—
1968-79 Chevy Nova/Buick Apollo/Olds Omega/Pontiac Ventura	COE3022	COE3224	COE3313
1967-69 Chevy Camaro/Pontiac Firebird	COE3021	—	—
1970-81 Chevy Camaro/Pontiac Firebird	COE3121	COE3222	—
1982-92 Chevy Camaro/Pontiac Firebird	COE3130	COE3226	—
1993-02 Chevy Camaro/Pontiac Firebird	COE3131	—	—
1964-72 Chevelle/Cutlass/LeMans/Skylark	COE3124	COE3223	—
1978-88 Malibu/Monte Carlo/Cutlass/Regal/Grand Prix/LeMans	COE3122	—	—
1982-00 Chevy/GMC S-10/S-15	—	COE3234	—
Honda			
1992-00 Civic Coupe/1992-96 Hatchback	COE9402	—	—
Mitsubishi			
1990-94 Eclipse	COE9405	—	—

*Custom fit kit comes complete with corresponding strut kit. No need to order separately.

Swing-Out Door Bar Kits

Kits are for 1-5/8" and 1-3/4" roll bars/cages and allow the door bar to swing out for easier entry and exit. Meets NHRA/IHRA rules for OEM full body cars 7.50 E.T. and slower. Includes release pin and hinge bracket.



Part No.	Description
COE3182	6/8-Point Kit, 1-3/4" Dia. Tubing
COE3183	10/12-Point Kit, 1-5/8" Dia. Tubing

Roll Cage Conversion Kits

Kits are engineered to convert legal 8-point roll bar to 10-point roll cage, eliminating the need to replace existing roll bar. Mandrel-bent 1-5/8" dia. x .134" wall mild steel kit includes top hoop and two forward down struts that tie into existing roll bar. Welding required.



Part No.	Description
COE3322	1962-67 Chevy II/Nova
COE3323	1970-81 Chevy Camaro/Pontiac Firebird
COE3324	1968-72 Chevy Chevelle/Buick Skylark/Olds Cutlass/Pontiac LeMans
COE3325	1979-93 Ford Mustang/Mercury Capri
COE3328	1994-04 Ford Mustang

Funny Car Cage Kit COE3187

Constructed from 1-5/8" dia. mild steel tubing, kit is designed as an upgrade for 10-point roll cages to offer maximum driver protection. Tubing is extra long and un-notched so it may be custom fitted. Welding required.



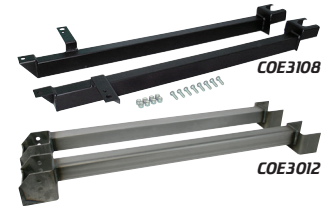
Seat Back Brace COE4905

Fully adjustable brace, which attaches to 1-3/4" roll bar tubing, is designed to meet NHRA/IHRA rules regarding rear bracing of the driver's seat. Includes 3" x 6" steel plate, which attach to the seat back, and brace with locking collar that adjusts back or forth. No welding required.



Frame Connectors

Connect front and rear frame sections on unibody cars. A must whenever rear suspension traction bar and cross-member are used. Computer designed and fixture welded for proper fit. Choose from bolt-on or weld-on versions.



Application	Bolt-On	Weld-On
1993-02 Chevy Camaro/Pontiac Firebird	COE3108	—
1982-92 Chevy Camaro/Pontiac Firebird	COE3111†	COE3046**
1976-81 Chevy Camaro/Pontiac Firebird	COE3120††	—
1970-75 Chevy Camaro/Pontiac Firebird	COE3114	COE3013
1967-69 Chevy Camaro/Pontiac Firebird	COE3113	COE3013
1968-76 Chevy Nova/Buick Apollo/Olds Omega/Pontiac Ventura	COE3112	COE3012
1962-67 Chevy II/Nova	COE3116	COE3016
1979-93 Ford Mustang/Mercury Capri	COE3118	COE3014
1965-70 Ford Mustang	COE3141	COE3048
	COE3140	—

**Without ladder bar crossmember.

†Exhaust must be eliminated.

††Fits stock exhaust.

Solid Aluminum Body Mounts COE3027

Aluminum body mounts eliminate subframe and body flex, reducing driveline problems and promoting quicker E.T.'s. Fit 1967-81 Camaro/Firebird, 1968-79 Nova, and 1971-77 Ventura/Omega/Apollo. Set of six.

